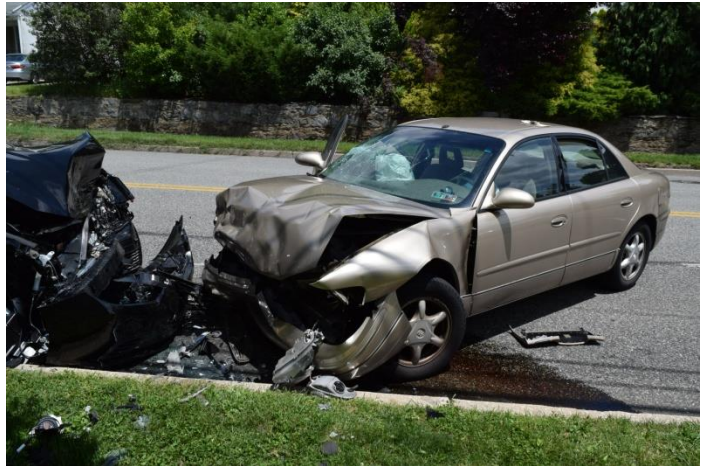


## Special Operations Unit

The Special Operations Unit (SOU) is responsible for many facets in the overall operation of the Police Department. The Unit is staffed by one Sergeant and six Officers, which allows the Department flexibility in deploying officers of the unit for special events, conducting training or other administrative functions without depleting the resources of the regular patrol unit.



One of the primary responsibilities of the SOU is fatal (and near fatal) crash investigations, crashes involving police vehicles, hit-and-run crashes or any other extraordinary crash. Specialized equipment used in those investigations includes the Leica Flex Line TS02 plus Manual Total Station measuring and diagramming device, the Laser Technology's LTI 200 laser measuring device and the CAD Zone's Crash Zone diagramming software. Members of the Unit have completed the basic and advanced fatal crash investigation classes.

In an attempt to prevent crashes, members of the Unit utilize the three E's - Engineering, Education and Enforcement. The engineering facet consists of conducting traffic surveys and making recommendations concerning traffic patterns and restrictions, i.e., traffic calming. The education facet finds Unit members attending community meetings and listening to their concerns, offering a variety of solutions and working with the Township to complete the task. The enforcement facet is the extremely focused solution to crash prevention. By issuing a citation, the goal of the police officer is to prevent the reoccurrence of a potentially dangerous behavior. The Department participated in two specialized programs, Buckle-Up PA and Aggressive Driving, which received both federal and state funding. The primary focus of the Buckle-Up PA program is seatbelt usage, and encompasses both education and enforcement portions of the program. The Aggressive Driving program is targeted toward aggressive driving behaviors, and is strictly an enforcement program. During these programs, contact was made with drivers, and officers issued 199 traffic citations through the Buckle-Up PA program and 225 traffic citations through the Aggressive Driving program.

**The SOU** is responsible for coordinating the Northern Delaware County DUI Task Force, which is comprised of six area municipalities. The Task Force was responsible for conducting DUI enforcement events and the training of officers concerning DUI related issues. In 2019, the Task Force conducted three DUI Checkpoints and four Roving DUI Patrol events.

Members of the Special Operations Unit are also tasked with assisting other police departments throughout the county with investigating serious and fatal vehicle crashes. These officers are assigned to the Delaware County Crash Team. These officers were called to aid other departments in crash investigations ten times in 2019.

Officers assigned to the SOU also conduct firearms training for the Police Department, as well as other training required by the State and Department. We conducted over 1,120 officer-hours of firearms training and qualification in 2019. Our Officers also attended over 6,100 hours of instruction outside of the Department in various disciplines related to their responsibilities.

**Additional duties** of the SOU include the maintaining of certifications, repairing or facilitating the police equipment and the disposition of seized registrations and driver's licenses. In 2019, the department seized and sent 173 documents back to PenDot. The unit also investigated 408 abandoned vehicles and processed for disposal 95 of them. The Unit also conducted 21 traffic studies for volume and speed. The officers of the SOU are responsible for specialized traffic enforcement as well as the department's Quartermaster.